



NYSERDA

Maritime Technical Working Group Meeting

May 22, 2023 | Zoom Webinar



Master Plan 2.0: Deep Water Geographic Scope

Master Plan 1.0 assessed ~4,000 sq. mi. and resulted in ~11 GW

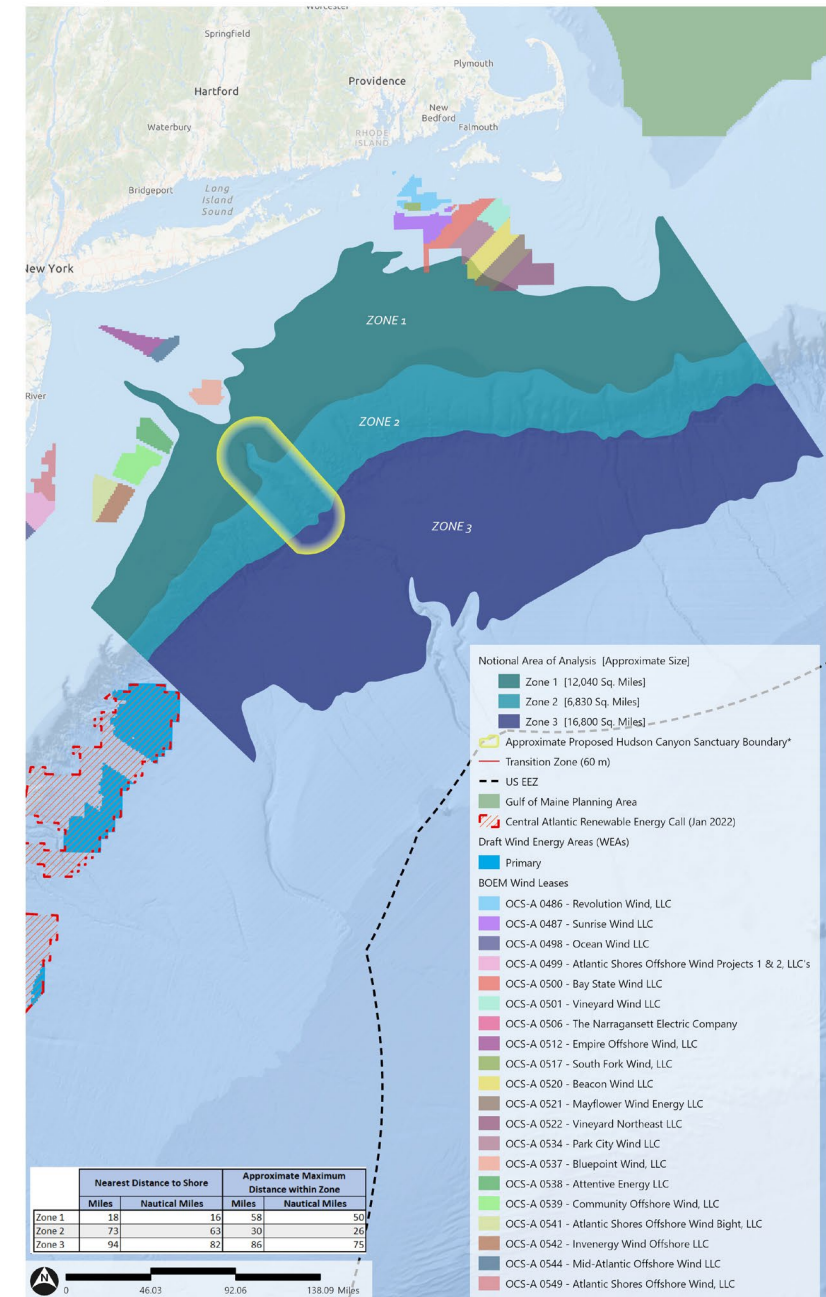
Master Plan 2.0 Study Area:

- > **Zone 1** : 12,040 sq. mi.
- > **Zone 2** : 6,830 sq. mi.
- > **Zone 3** : 16,800 sq. mi.

Study area extends east from the 60-meter contour out past the continental shelf break to the edge of the 3,000-meter contour.

- > **Zone 1** (remaining shelf) extends from the 60-meter contour to the continental shelf break.
- > **Zone 2** spans the steeply sloped continental shelf break (unique canyon habitats).
- > **Zone 3** extends from the continental shelf break out to the 3,000-meter contour.

Figure 2: Notional Area of Analysis Overview
NYSERDA OSW | East Coast US



Source: Esri, GEBCO, DeLorme, Natuzzi, Esri, HERE, Garmin, FAO, NOAA, USGS, EPA, NPS.
This map is for reference only and does not represent an official boundary proposal from NYSERDA. Credit: NYSERDA.

Master Plan 2.0 Deep Water Track 1 Studies: To Inform “Areas for Consideration”



Credit: NOAA Fisheries

Maritime Activity

- > Maritime Assessment: Commercial and Recreational Uses

The Environment

- > Birds and Bats
- > Fish and Fisheries
- > Marine Mammals and Sea Turtles
- > Benthic Habitats
- > Environmental Sensitivity Analysis

Technology

- > Offshore Wind Resource Assessment and Oceanographic Conditions
- > Deep Water Wind Technologies: Technical Concepts

Feasibility

- > Distance and Depth Implications on Cost

March 2nd M-TWG Cabling Workshop

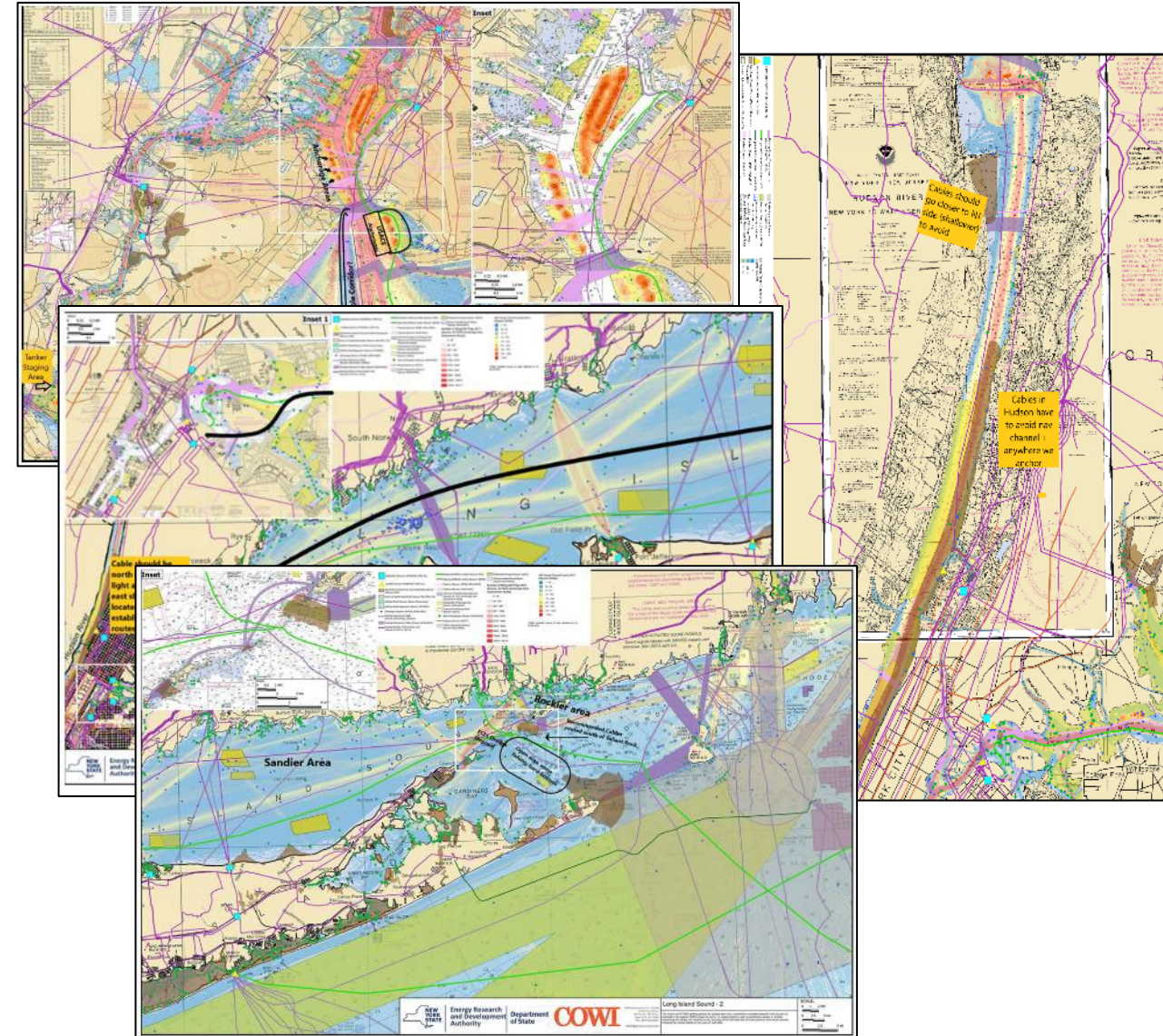
*5 Themes in Workshop Summary:
Not consensus feedback or requirements –
these are observations and ideas*

1. Due diligence of maritime uses and coastal conditions
2. Improve communication and coordination
3. “Future-proof” cable routes
4. Incorporate technology solutions
5. Adjustments to liability structure



Near-term next steps

- Submit feedback to NYS Public Service Commission (DONE, submitted 4/20)
- Add cable resources to [M-TWG Resources](#) (DONE)
- Share Common Practice Anchorage Areas (DONE)
- Schedule learning opportunity on NYS Article VII (In Progress)
- Explore opportunities to build consensus
 - M-TWG Workplan
 - M-TWG Shared Research Agenda



M-TWG Updates

- Website: nymtwg.com
- M-TWG Studies
 - *Anchorage Area Assessment*: Common practice anchorages published on M-TWG website. Final report available Q3.
 - *Loss of Propulsion & Steering*: draft comments due 6/2. Finalize Q3.
- M-TWG Technical Assistance mini-bid
- Post-meeting survey (PAC, M-TWG membership, workforce opportunities)

M-TWG 2023 Meeting Plan

M-TWG
Cabling
Workshop

March
3

Q1

M-TWG
NY Ports
Build-out

May
22

Q2

M-TWG
MP2.0
Update

Summer

Q3

M-TWG
MP2.0 &
M-TWG Workplan

Winter

Q4

** Sector-Only
Sessions, as
needed*

NYS MP2.0
Blueprint

NYS MP2.0
Areas for
Consideration

Offshore Wind Supply Chain – Open Procurement

Sunrise Wind – 924 MW

Supply Scopes - <https://sunrisewindny.com/supply-forums>. (Scroll to bottom & click presentations to access detailed information)

Awarded Tier 1

- Array Cable Installation & Foundation and AFC Transportation – **Boskalis**
 - Protected Species Observer – **Miller's Launch**
- Offshore Hook-up & Commissioning, HVDC Converter Station – **Aker Solutions**
- Offshore Export Cable & Array Cable Installation – **Jan de Nul**
- WTG Installation – **Siemens Gamesa Renewable Energy**
- Maritime Support for SOV – **Edison Chouest Offshore**
- WTG Installation Vessel - **Blue Ocean (Seajacks & Dominion Energy)**

Services & Consumables

Fuel • Water • Port agents • Oils and lubes • Special survey suppliers • Providers for critical components such as cranes and life saving equipment • Complex engineering • Diving services • Suppliers of spare parts • Medical supplies • Guard Vessels • Species Observer Vessels

Other vessel opportunities required include –

- Hydrodynamic Survey vessel, equipment and personnel.
- Pre Lay Grapnel Run vessel, equipment and personnel.
- Boulder Clearance vessel, equipment and personnel.
- Port facilities and supply chain to enable offshore personnel rotations

Offshore Wind Supply Chain Database


Supply Chain Database

As the pipeline of U.S. offshore wind projects continues to mature, the supply chain that is currently located in Europe will position itself to efficiently serve the U.S. market through investments in local workforce, infrastructure, and technology. New York companies are in an ideal position to capitalize on these economic opportunities, which will not only create new local jobs but also reduce the cost of offshore wind energy.










NYSERDA maintains an Offshore Wind Supply Chain Database that showcases local, regional, and global companies with capabilities to serve the offshore wind industry.

List Your Company

To request placement in this database or to update your company's information, please submit your company's information or changes using NYSERDA's [Offshore Wind Supply Chain Database Request Form](#)

 The database is updated quarterly.

Organization Type

Other Organizations		273
Consulting Services		265
Onshore Construction Services		241
Manufactured Products		210
Specialist Services		199
Manufacturing and Fabrication Svcs.		169
Offshore Const./Ops. and Vessels		134
Labor Organizations		120
Not Provided		25
Null		2

[Register Your Company Here](#)

EPA Clean Ports Program - \$3 Billion – Open RFI

<https://www.epa.gov/inflation-reduction-act/clean-ports-program#technicalRFI>

New \$3 billion EPA program to fund grants and rebates to:

- Purchase or install zero-emission port equipment or technology;
- Conduct any relevant planning or permitting in connection with the purchase or installation of such zero-emission port equipment or technology; and
- To develop qualified climate action plans that:
 - Establishes goals, implementation strategies, and accounting and inventory practices to reduce emissions of GHGs, criteria air pollutants, and hazardous air pollutants at one or more ports,
 - Includes stakeholder collaboration/communications strategy to address potential effects of plan on stakeholders, including low income and disadvantaged near-port communities, and
 - Describes measures to increase resiliency of port
- \$750M of total funding to be spent in nonattainment areas
- Funding available until September 30, 2027

Eligible Funding recipients include:

- Port Authority
- State, regional, local, or tribal agency that has jurisdiction over a port authority or port
- Air pollution control agency

Private entity that:

- Applies in partnership with an eligible entity above, and
- Owns, operates, or uses facilities, cargo-handling equipment, transportation equipment, or related technology of a port