

JAY

CONFERENCE

MEET TO SUCCEED

Plaza District

515 Madison Avenue

New York, NY 10022



JAY CONFERENCE AT PLAZA DISTRICT

Jay Conference was born out of an increasing demand for larger meeting space. Traditional meeting spaces are a hassle to reserve, provide little to no administrative service and the presentation technology (much like the decor) is outdated. Jay Conference is a step above traditional meeting spaces. An elegant 15,000 square foot soundproof conference center featuring the latest in presentation technology, professional meeting planners, and gourmet catering packages make Jay Conference the best choice of venue to host your meeting.

Included Amenities



Advanced Presentation Technology



High-speed WiFi



Flexible event and meeting space



Top-level catering on-site



Unlimited access to the recharge area

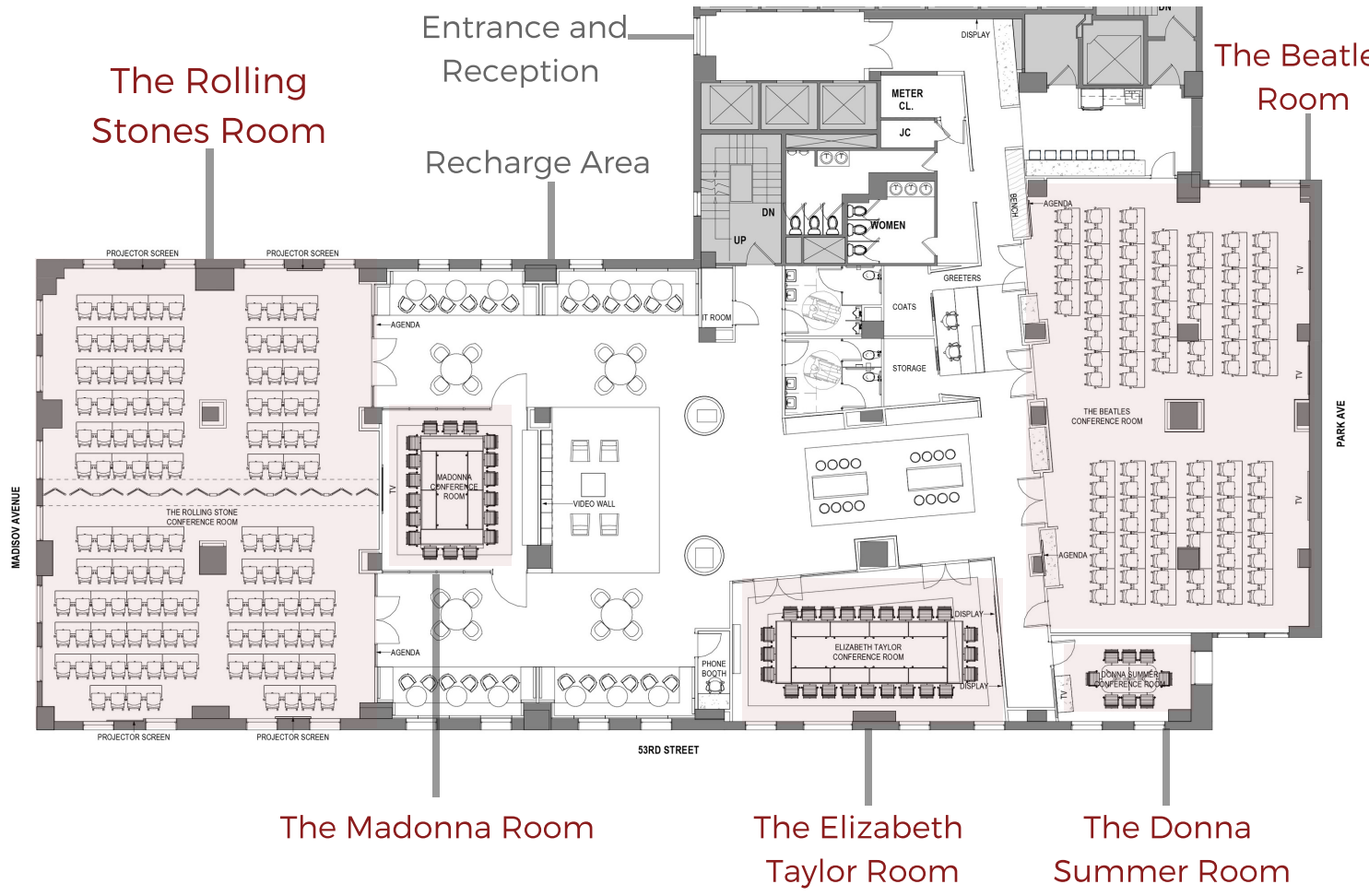


Event planning services

An Overview of Our Space

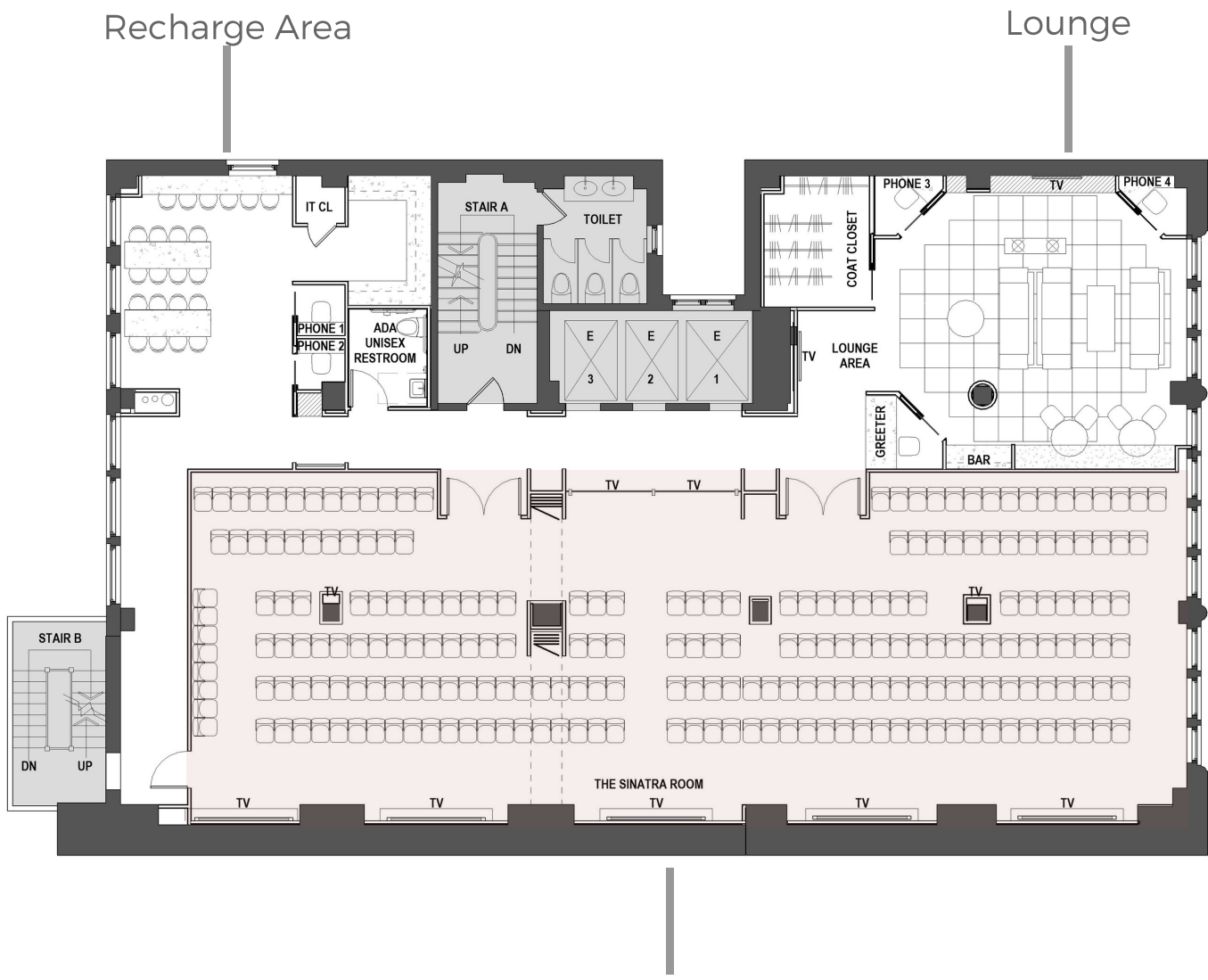


10th floor



Meeting Room	Dimension (ft)	Area (sq ft)	Ceiling Height (ft)	Theater	Classroom	Pod	Boardroom	Reception
Rolling Stones	58 x 43	2,600	11'	220	156	144	n/a	250
Beatles	57 x 36	2,150	11'	170	110	114	n/a	200
Elizabeth Taylor	35 x 21	750	11'	60	30	36	30	75
Madonna	21 x 21	450	11'	40	18	24	18	45
Donna Summer	17 x 11	200	11'	16	n/a	10	12	20
Recharge A	14 x 11	155	11'	n/a	n/a	n/a	n/a	15
Recharge B	25 x 20	500	11'	n/a	n/a	n/a	n/a	50
Recharge C	42 x 20	840	11'	n/a	n/a	n/a	n/a	85
Recharge D	42 x 20	840	11'	n/a	n/a	n/a	n/a	85

2nd Floor



The Sinatra Room

Meeting Room	Dimension (ft)	Area (sq ft)	Ceiling Height (ft)	Theater	Classroom	Pod	Boardroom	Reception
The Sinatra	80 x 28	2350	9'	200	138	131	n/a	250
Recharge Area	25 x 17	425	9'	n/a	n/a	n/a	n/a	50
Lounge Area	25 x 25	625	9'	n/a	n/a	n/a	n/a	115

An Overview of Our Space

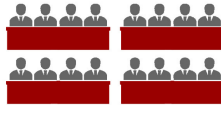
Theater



Boardroom



Classroom



Reception



Pods / Rounds



Our on-demand meeting rooms can easily be rearranged to accommodate the need for theater, boardroom, classroom, reception, or pods/rounds style setups and always include onsite professional administrative and IT support. Our 5 fully adjustable conference rooms were designed to embody the classic style of their namesake.



The Rolling Stones Room

We've got moves like Jagger! At 2,600 square feet, our Rolling Stones' room is the largest conference space our Plaza District location has to offer and includes 4 screen projectors, ideal for all types of large-scale presentations. The room can easily accommodate up to 250 guests reception-style or up to 220 theater-style.



The Beatles Room

Highly regarded as one of the most influential bands of all time, the Beatles' are the epitome of rock n' roll. Our Beatles' room is the second largest meeting space at Plaza District with over 2,000 square feet and maxing out at 200 attendees. The room is adjacent to our Recharge Area, specifically designed to increase focus and productivity. Take a walk down Abbey Road at Jay Conference!



The Elizabeth Taylor Room

Elizabeth Taylor's iconic beauty and glamour transformed classic Hollywood cinema. Much like our space, she is known for her charm and elegance. At 750 square feet, the Elizabeth Taylor room is located directly behind the reception desk and in close proximity to our phone booths for private calls.

An Overview of Our Space

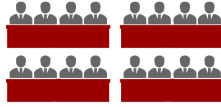
Theater



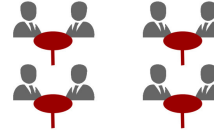
Boardroom



Classroom



Reception



Pods / Rounds



Our on-demand meeting rooms can easily be rearranged to accommodate the need for theater, boardroom, classroom, reception, or pods/rounds style setups and always include onsite professional administrative and IT support. Our 5 fully adjustable conference rooms were designed to embody the classic style and elegance of their namesake.



The Madonna Room

Commonly referred to as the “Queen of Pop,” Madonna’s music and style redefined a generation. Located just in front of our Rolling Stones’ room, our Madonna conference space is 450 square feet and can entertain up to 45 guests. So come on, vogue!



The Donna Summer Room

Renowned as the “Queen of Disco,” Donna Summer represents one of the world’s best selling artists of all time. She works hard for her money! The Summer meeting space is the smallest at this location, 200 square feet, and can accommodate 10-20 guests depending on the setup style.

The Experience

with that extra touch



Technology

All of our conference spaces feature the latest in Crestron presentation technology and come fully-equipped with large screen TVs, projectors, conference calling capability, and unlimited high-speed wifi. The modular tables with built-in ports for charging, USB, and HDMI inputs can easily be rearranged according to your needs. Our onsite audio and visual technical support staff guarantee a successful conference every time.



Event Planning Support

You're here to make some big moves for your business, so leave the planning to us. Our team of meeting organizers and event planners are highly trained and specialize in providing unparalleled support for high performance corporate meetings and gatherings. Jay Conference is known for our unbeatable standards of customer service with increasing efforts to exceed expectations for every event.



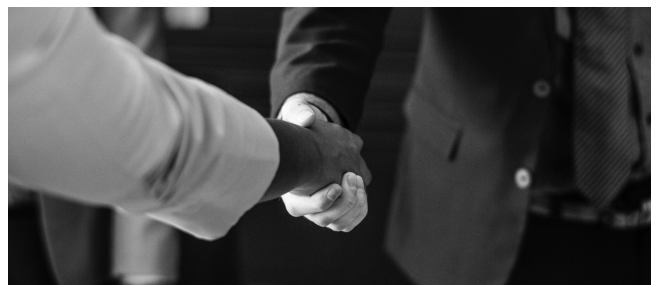
Catering

Jay Conference has an exclusive catering partnership with Cafe Metro, offering the finest selections of breakfast, lunch and refreshment packages. Give your team a meeting experience they will never forget by serving 5-star cuisine conveniently available to order directly on our website.



Customer Support

In addition to planning all logistics of your meeting, our professional staff anticipate the needs of your team and assist with any onsite requests. We offer several business and reception services including, but not limited to, reception greeting, coat check, courier arrangements, as well as copying, scanning, and faxing on-demand.



Directions to Jay Conference

Closest Metro Stations



The E & M trains stop at 5th Avenue and 53rd Street and the No. 6 train stops at 51st and Lexington. The entrance to our building is on 53rd Street between Park and Madison Avenue.

Bus Stations

Buses continually run north on Madison Avenue and south on Fifth Avenue, stopping on the corner of 53rd Street. The 57th Street cross-town bus stops on the corner of 57th & Madison.

M1, M3, M4, M102, M103,
BxM4 & Q32





Meeting & Event

MENU

BRONZE

Recharge Cafe with unlimited refreshments & snacks

SILVER

Recharge Cafe with unlimited refreshments & snacks
Continental Breakfast
Lunch

- 1 Seasonal Salad
- 1 Protein Salad
- 2 Sandwiches
- Assorted Dessert

GOLD

Recharge Cafe with unlimited refreshments & snacks
Executive Breakfast with hot items
Lunch

- 3 Seasonal Salads
- 1 Protein Salad
- 2 Sandwiches
- 1 Hot Entree
- Assorted Dessert

PLATINUM

Recharge Cafe with unlimited refreshments & snacks
VIP Breakfast with hot items
Lunch

- 2 Seasonal Salads
- 1 Protein Salad
- 2 Hot Entrees
- 2 Hot Sides
- Selection of Signature Desserts

café
metro
WHERE THE CITY EATS

JAY
CONFERENCE

jayconference.com
(212) 569-7000



Plaza District

515 Madison
10th Floor
New York, NY 10022

Opening November 1st, 2019

Fifth Avenue

15 W 38th Street
1st and 2nd Floors
New York, NY 10018



Grand Central

369 Lexington Avenue
2nd & 3rd Floors
New York, NY 10017

Madison Avenue

315 Madison Avenue
3rd & 4th Floors
New York, NY 10017

Times Square

10 Times Square
3rd, 5th, & 6th Floors
New York, NY 10018

34th Street

31 west 34th Street
7th & 8th Floor
New York, NY 10001

Penn Station

1370 Broadway
5th Floor
New York, NY 10018

Financial District

30 Broad Street
14th Floor
New York, NY 10004

Fifth Avenue

15 W 38th Street
Ground & 4th to 12th Floors
New York, NY 10018

Plaza District

515 Madison
8th & 9th Floors
New York, NY 10022