

NEW YORK STATE

Energy Research and Development Authority

Department of State

COWI

BTMI Engineering P.C. (COWI)
Wall Street Plaza,
88 Pine St., 4th Floor,
New York, NY 10005
TEL: 329.526.0301
Website: www.cowi.com

Hudson River

This map is an M-TWIG working product for collaboration only, created from compiled datasets from sources as indicated in the legend. COWI makes no claims, no representations, and no warranties express or implied, including the validity, the reliability, or the accuracy of the GIS data and GIS data products from these sources, including the implied validity of any uses of such data.

SCALE:

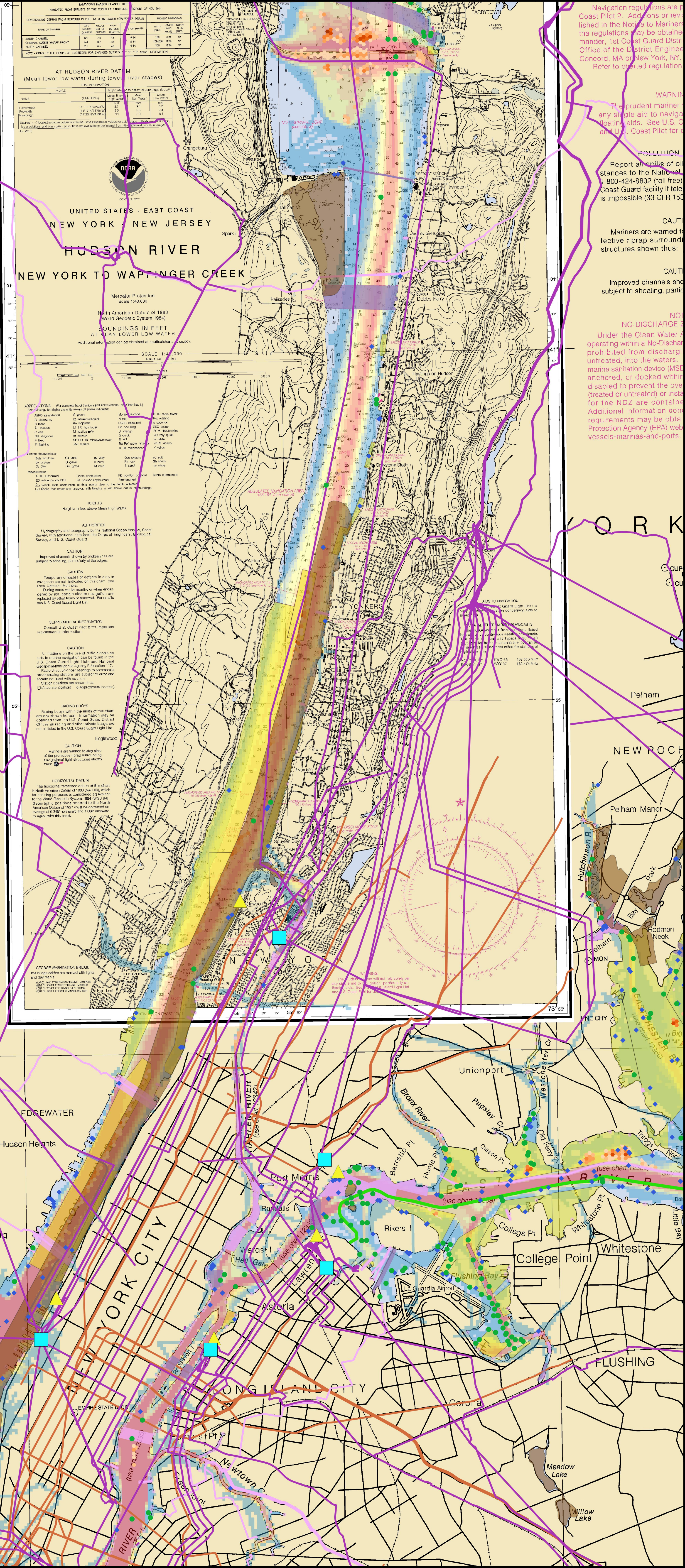
Legend

- █ Stationation (Source: NYSERDA, DMV, GU)
- █ Landfill (Source: NYSERDA, DMV, GU)
- █ Significant Coastal Fish and Wildlife Habitats (Source: NYS)
- █ Areas of Lightening Activity (Source: Blue Plan CT)
- █ Artificial Reef (Source: NYSERDA, NYS, NYSDEC)
- █ Wreckage (Source: AMOIS, NOAA ENC)
- █ Existing Submarine Cable (Source: NOAA ENC, VASCCA)
- █ Existing Submarine Cable (Source: NOAA ENC)
- █ Submarine (Source: COMINT)
- █ Existing Electric Transmission Line (Source: PLATTS, HPFD)
- █ Proposed Offshore Cable (Source: NYS)
- █ Approved Offshore Cable (Source: BOEM)
- █ Pipeline (Source: NOAA ENC)
- █ Common Practice Anchorage Area (Source: NOAA ENC)
- █ Designated Anchorage Area (Source: NOAA ENC)
- █ Proposed Anchorage Area (Source: USCG)
- █ Adult to Navigation (Source: NOAA ENC)
- █ Subway (Source: COMINT)
- █ Traffic Separation Scheme (Source: NOAA ENC)
- █ Proposed Ferryway (Source: USCG)
- █ Recommended Vessel Route (Source: NOAA ENC)
- █ Number of Listing AIS Progs 2017 (Source: M-TWIG Anchorage Area Assessment Study)

AIS Vessel Transit Counts 2017

1 - 25	26 - 50	51 - 75	76 - 100	101 - 200	201 - 500	501 - 750	751 - 1,000	1,001+
Light Blue	Light Green	Green	Yellow-Green	Yellow	Orange	Red-Orange	Red	Dark Red

*Table available source of data obtained as of 02/02/2023



AT HUDSON RIVER DATUM
(Mean lower low water during lower river stages)
Tidal variations:
Spring Range: 5.75 feet
Neap Range: 3.25 feet
Range: 2.50 feet

PLACE	NAME	TYPE	HEIGHT	CHARACTER
MUNICIPAL	Bay Bridge	Bay Bridge	70	Bay Bridge
	Palisades	Palisades	150	Palisades
	George Washington	George Washington	150	George Washington
	Palisades	Palisades	150	Palisades
	Palisades	Palisades	150	Palisades
INDUSTRIAL	Palisades	Palisades	150	Palisades
	Palisades	Palisades	150	Palisades
	Palisades	Palisades	150	Palisades
	Palisades	Palisades	150	Palisades
	Palisades	Palisades	150	Palisades

ABBREVIATIONS (For symbols for objects and abbreviations, refer No. 1.)

HEIGHTS
Heights in feet above Mean High Water.

AUTHORITIES
Hydrography and topography by the National Ocean Service, Coast Survey with tidal data from the Corps of Engineers, Coastal Survey, and U.S. Coast Guard.

CAUTION
Improved channels shown by broken lines are subject to shoaling, particularly at the edges.

CAUTION
Temporary changes or work in aids to navigation are not indicated on this chart. See Local Notice to Mariners.

CAUTION
During some winter months or when endangered by ice, certain aids to navigation are replaced by other types or removed. For details see U.S. Coast Guard Light List.

SUPPLEMENTAL INFORMATION
Consult U.S. Coast Pilot for important supplemental information.

CAUTION
Emissions on the use of radio signals as aids to more navigation can be found in the U.S. Coast Guard Light Lists and National Oceanic and Atmospheric Administration's Buoyage and Aids to Navigation.

RACING BUOYS
Racing buoys within the limits of this chart are not shown. Information may be obtained from the U.S. Coast Guard District Office at Annapolis and other private sources and not all listed in the U.S. Coast Guard Light List.

CAUTION
Navigators are warned to stay clear of the protective rings surrounding submerged light structures shown thus: .

HORIZONTAL DATUM
The horizontal reference datum of this chart is Mean Sea Level at 1983 (MSSL), which for charting purposes is considered equivalent to the World Geodetic System 1983 (WGS 84). Geographic positions referred to the North American Datum of 1983 must be corrected an average of 6.389' northward and 1.049' westward to agree with this chart.

GEORGE WASHINGTON BRIDGE
The bridge carries an approach to the Hudson River. The bridge carries an approach to the Hudson River. The bridge carries an approach to the Hudson River.

REGULATED NAVIGATION AREA
REGULATED NAVIGATION AREA

NEEDS TO NAVIGATION

UNDEGRADED VESSEL TRANSMISSIONS

UNDEGRADED VESSEL TRANSMISSIONS

Navigation regulations are published in the Notices to Mariners; the regulations may be obtained from the 1st Coast Guard District Office of the District Engineer, Concord, MA or New York, NY. Refer to charted regulation.

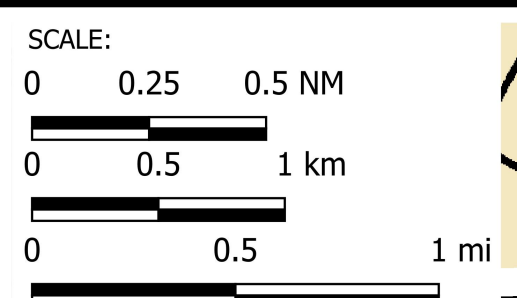
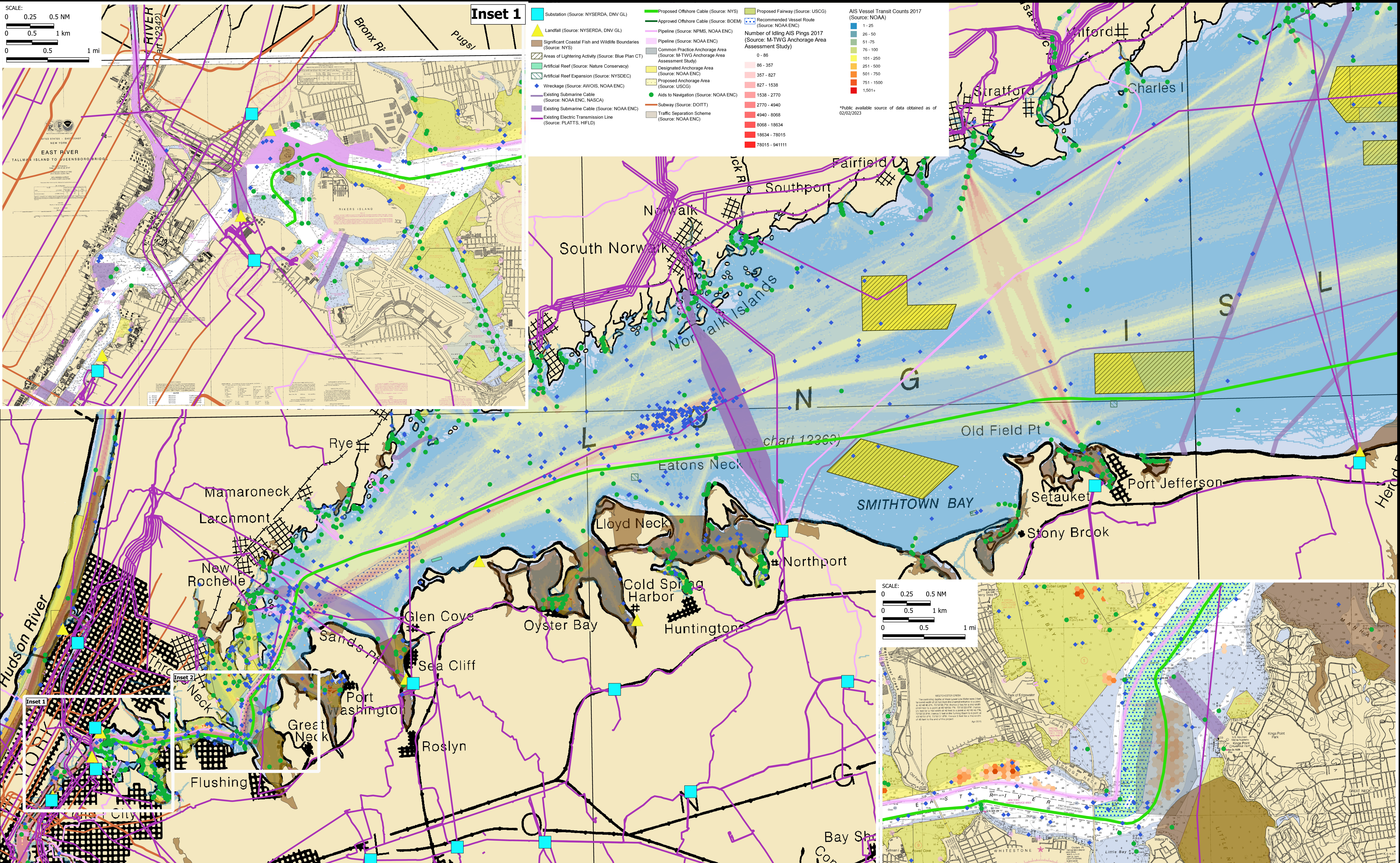
WARNING
The prudent mariner should use any single aid to navigation, floating aids. See U.S. Coast Pilot for details.

POLLUTION
Report all spills of oil or hazardous materials to the National Response Center at 1-800-424-8802 (toll free). Coast Guard facility if tele is impossible (33 CFR 155.401).

CAUTION
Mariners are warned to protective riprap surrounding structures shown thus: .

CAUTION
Improved channels shown by broken lines are subject to shoaling, particularly at the edges.

NO-DISCHARGE ZONE
Under the Clean Water Act, vessels operating within a No-Discharge Zone are prohibited from discharging untreated, into the waters. Marine sanitation devices (MSD) anchored, or docked within the NDZ are contained (treated or untreated) or installed for the NDZ are contained. Additional information concerning requirements may be obtained from the U.S. Environmental Protection Agency (EPA) website - vessels-marinas-and-ports.



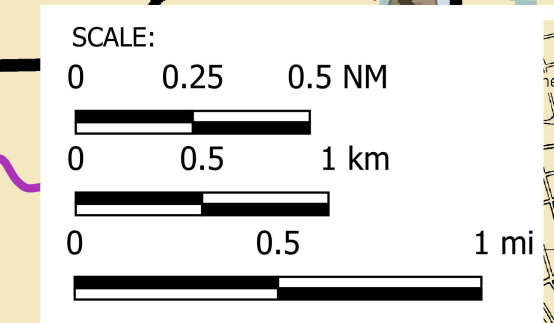
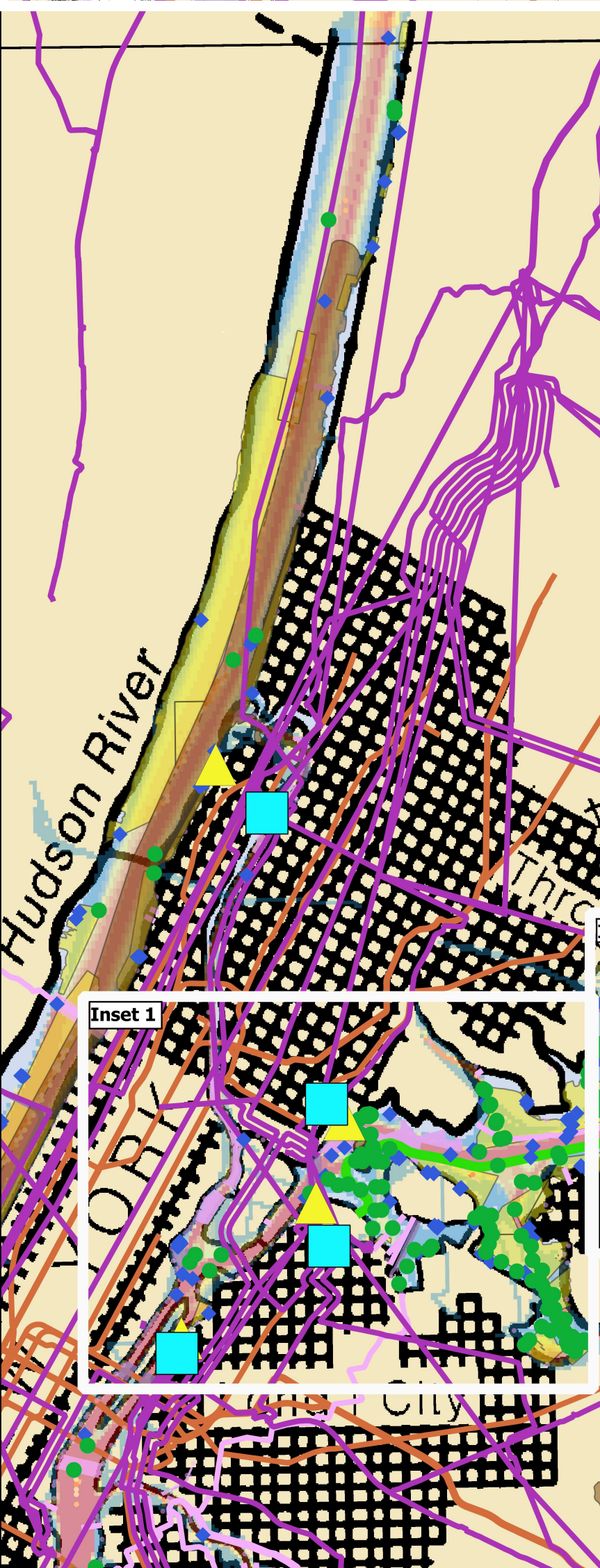
Inset 1

- Substation (Source: NYSDA, DNV GL)
- ▲ Landfall (Source: NYSDA, DNV GL)
- Significant Coastal Fish and Wildlife Boundaries (Source: NYS)
- Areas of Lightering Activity (Source: Blue Plan CT)
- Artificial Reef (Source: Nature Conservancy)
- Artificial Reef Expansion (Source: NYSDEC)
- ◆ Wreckage (Source: AWOIS, NOAA ENC)
- Existing Submarine Cable (Source: NOAA ENC, NASCA)
- Existing Submarine Cable (Source: NOAA ENC)
- Existing Electric Transmission Line (Source: PLATTS, HIFLD)
- Proposed Offshore Cable (Source: NYS)
- Approved Offshore Cable (Source: BOEM)
- Pipeline (Source: NPMS, NOAA ENC)
- Pipeline (Source: NOAA ENC)
- Designated Anchorage Area (Source: NOAA ENC)
- Proposed Anchorage Area (Source: USCG)
- Aids to Navigation (Source: NOAA ENC)
- Subway (Source: DOITT)
- Traffic Separation Scheme (Source: NOAA ENC)
- Recommended Vessel Route (Source: NOAA ENC)
- Common Practice Anchorage Area (Source: M-TWG Anchorage Area Assessment Study)

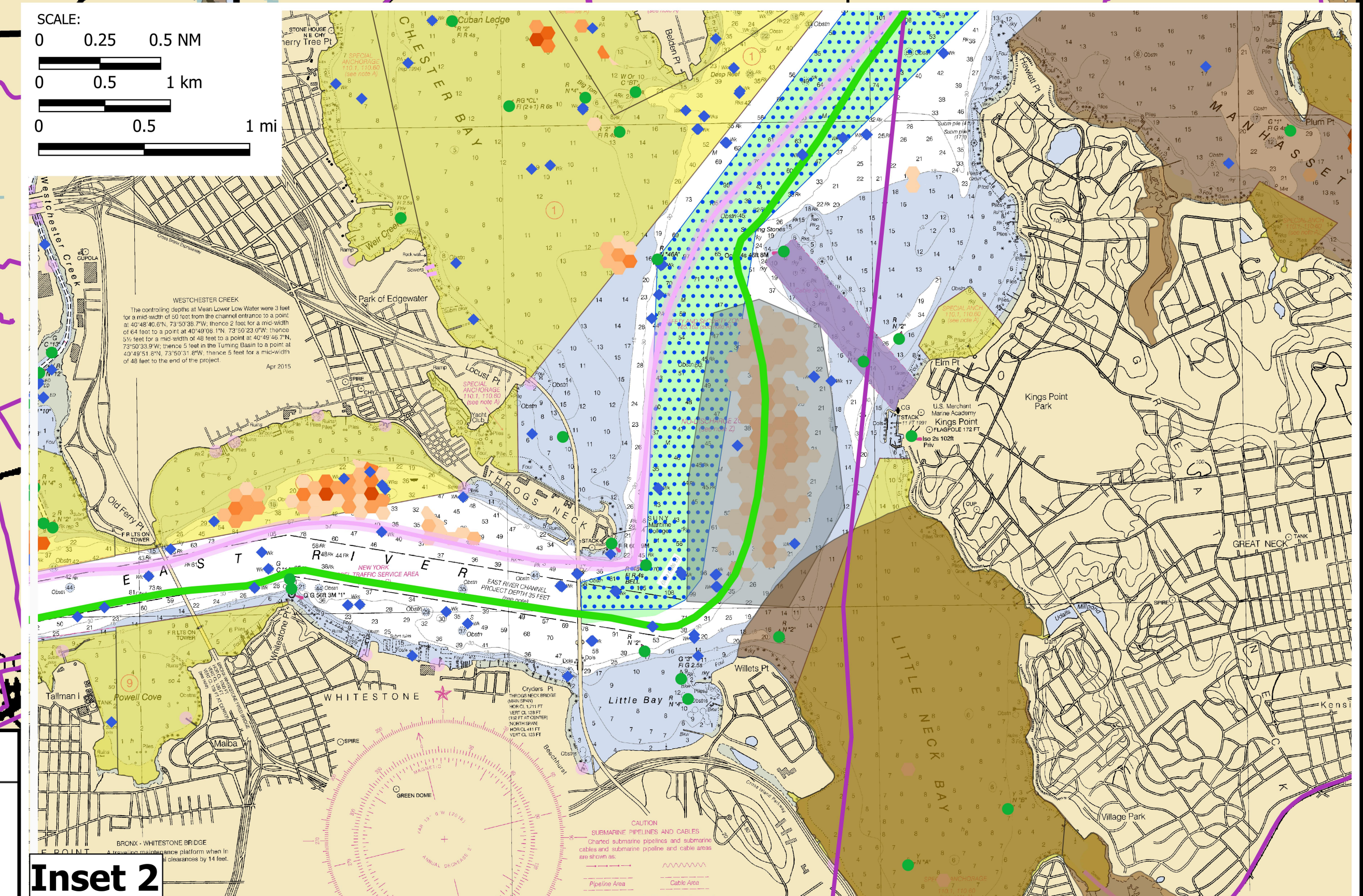
- Number of Idling AIS Pings 2017 (Source: M-TWG Anchorage Area Assessment Study)**
- 0 - 86
- 86 - 357
- 357 - 827
- 827 - 1538
- 1538 - 2770
- 2770 - 4940
- 4940 - 8068
- 8068 - 18634
- 18634 - 78015
- 78015 - 941111

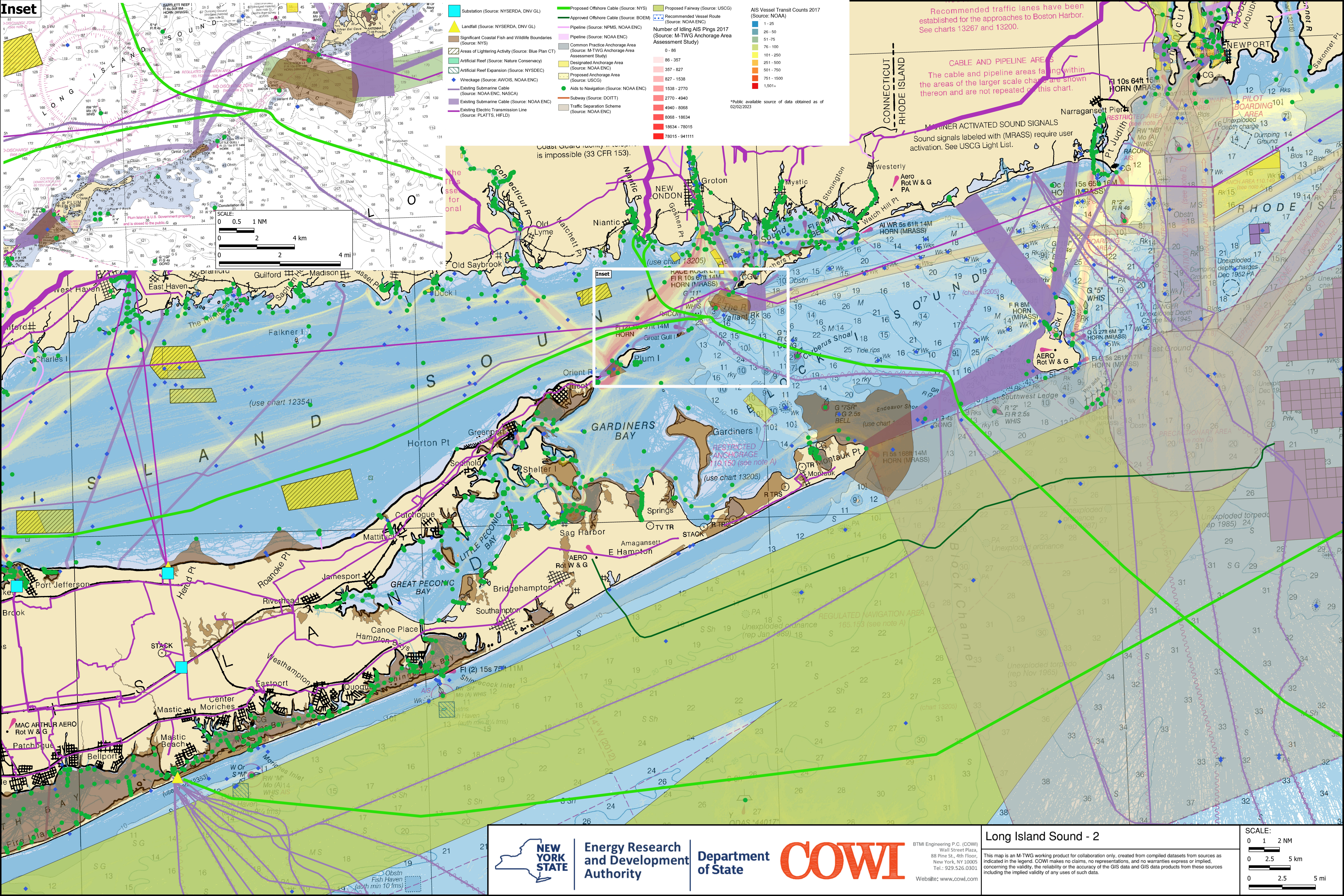
- AIS Vessel Transit Counts 2017 (Source: NOAA)**
- 1 - 25
- 26 - 50
- 51 - 75
- 76 - 100
- 101 - 250
- 251 - 500
- 501 - 750
- 751 - 1500
- 1,501+

*Public available source of data obtained as of 02/02/2023



Inset 2





- Substation (Source: NYSEDA, DNV GL)
- Landfall (Source: NYSEDA, DNV GL)
- Significant Coastal Fish and Wildlife Boundaries (Source: NYS)
- Areas of Lightening Activity (Source: Blue Plan CT)
- Artificial Reef (Source: Nature Conservancy)
- Artificial Reef Expansion (Source: NYSDEC)
- Wreckage (Source: AWOIS, NOAA ENC)
- Existing Submarine Cable (Source: NOAA ENC, NASCA)
- Existing Submarine Cable (Source: NOAA ENC)
- Existing Electric Transmission Line (Source: PLATTS, HIFLD)
- Proposed Offshore Cable (Source: NYS)
- Approved Offshore Cable (Source: BOEM)
- Pipeline (Source: NPMS, NOAA ENC)
- Pipeline (Source: NOAA ENC)
- Common Practice Anchorage Area (Source: M-TWG Anchorage Area Assessment Study)
- Designated Anchorage Area (Source: NOAA ENC)
- Proposed Anchorage Area (Source: USCG)
- Aids to Navigation (Source: NOAA ENC)
- Subway (Source: DOITT)
- Traffic Separation Scheme (Source: NOAA ENC)
- Proposed Fairway (Source: USCG)
- Recommended Vessel Route (Source: NOAA ENC)
- Number of Idling AIS Pings 2017 (Source: M-TWG Anchorage Area Assessment Study)

- AIS Vessel Transit Counts 2017 (Source: NOAA)
- 0 - 85
- 86 - 357
- 357 - 827
- 827 - 1538
- 1538 - 2770
- 2770 - 4940
- 4940 - 8068
- 8068 - 18634
- 18634 - 78015
- 78015 - 941111

- Public available source of data obtained as of 02/02/2023
- 1 - 25
- 26 - 50
- 51 - 75
- 76 - 100
- 101 - 250
- 251 - 500
- 501 - 750
- 751 - 1500
- 1,501+

Recommended traffic lanes have been established for the approaches to Boston Harbor. See charts 13267 and 13200.

CABLE AND PIPELINE AREAS
The cable and pipeline areas falling within the areas of the larger scale charts are shown thereon and are not repeated on this chart.

MANNEQUIN ACTIVATED SOUND SIGNALS
Sound signals labeled with (MRASS) require user activation. See USCG Light List.

SCALE: 0 0.5 1 NM
0 2 4 km
0 2 4 mi

Coast Guard Vessel Traffic Service is impossible (33 CFR 153).

CONNECTICUT RIVER

NEW LONDON

GROTON

MYSTIC

STONINGTON

WESTERLY

WATCH HILL Pt

AL WR 5s 61ft 14M HORN (MRASS)

AI WR 5s 61ft 14M HORN (MRASS)

AI WR 5s 61ft 14M HORN (MRASS)

AI WR 5s 61ft 14M HORN (MRASS)

AI WR 5s 61ft 14M HORN (MRASS)

AI WR 5s 61ft 14M HORN (MRASS)

AI WR 5s 61ft 14M HORN (MRASS)

AI WR 5s 61ft 14M HORN (MRASS)

AI WR 5s 61ft 14M HORN (MRASS)

AI WR 5s 61ft 14M HORN (MRASS)

AI WR 5s 61ft 14M HORN (MRASS)

AI WR 5s 61ft 14M HORN (MRASS)

AI WR 5s 61ft 14M HORN (MRASS)

AI WR 5s 61ft 14M HORN (MRASS)

AI WR 5s 61ft 14M HORN (MRASS)

AI WR 5s 61ft 14M HORN (MRASS)

AI WR 5s 61ft 14M HORN (MRASS)

AI WR 5s 61ft 14M HORN (MRASS)

AI WR 5s 61ft 14M HORN (MRASS)

AI WR 5s 61ft 14M HORN (MRASS)



Energy Research and Development Authority

Department of State

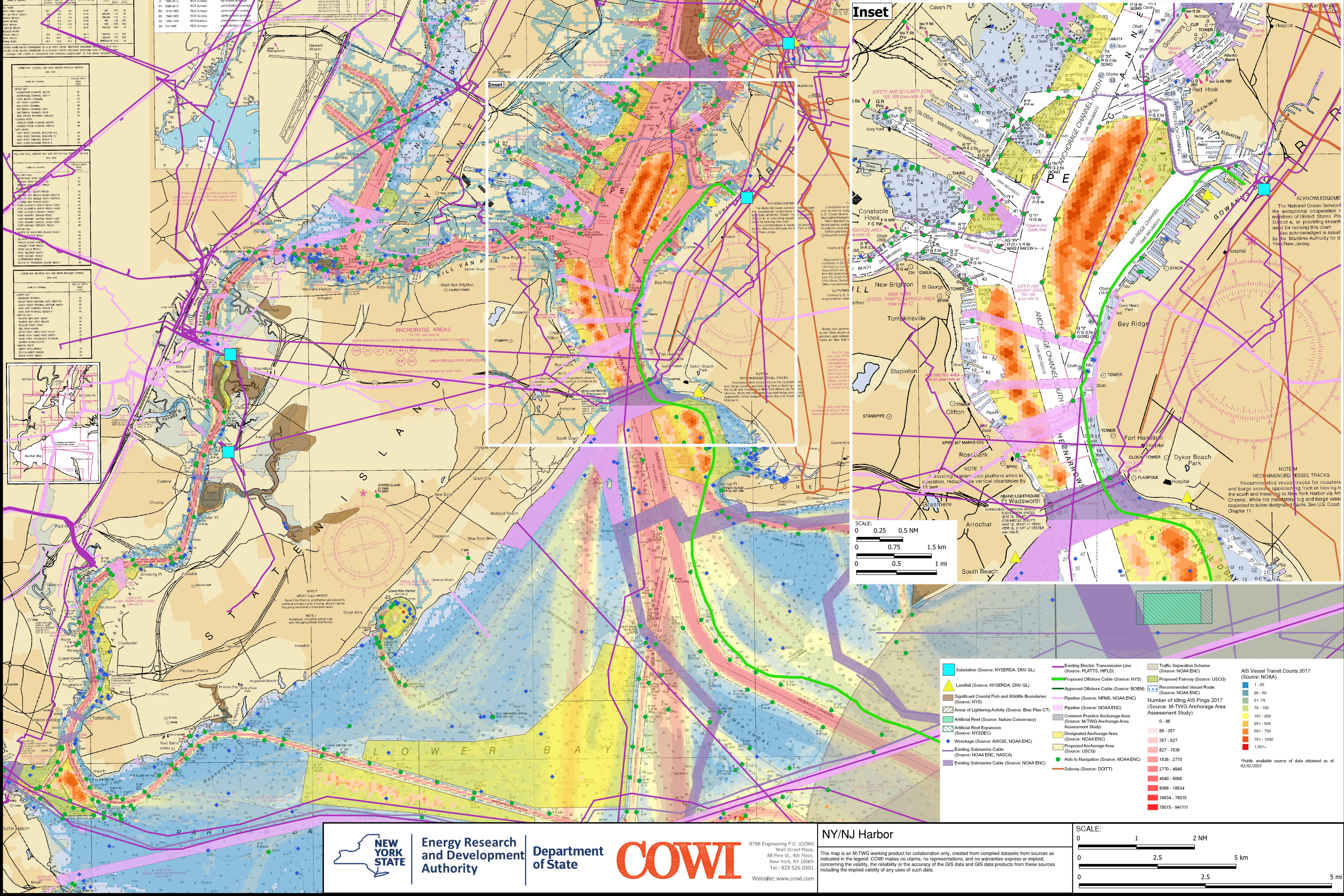


BTMI Engineering P.C. (COWI)
Wall Street Plaza,
88 Pine St., 4th Floor,
New York, NY 10005
Tel.: 929.526.0301
Website: www.cowi.com

Long Island Sound - 2

This map is an M-TWG working product for collaboration only, created from compiled datasets from sources as indicated in the legend. COWI makes no claims, no representations, and no warranties express or implied concerning the validity, the reliability or the accuracy of the GIS data and GIS data products from these sources including the implied validity of any uses of such data.

SCALE:
0 1 2 NM
0 2.5 5 km
0 2.5 5 mi

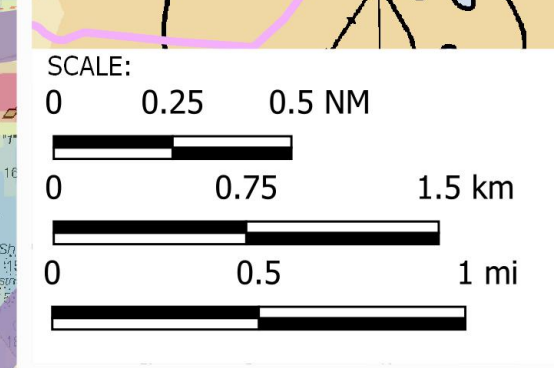
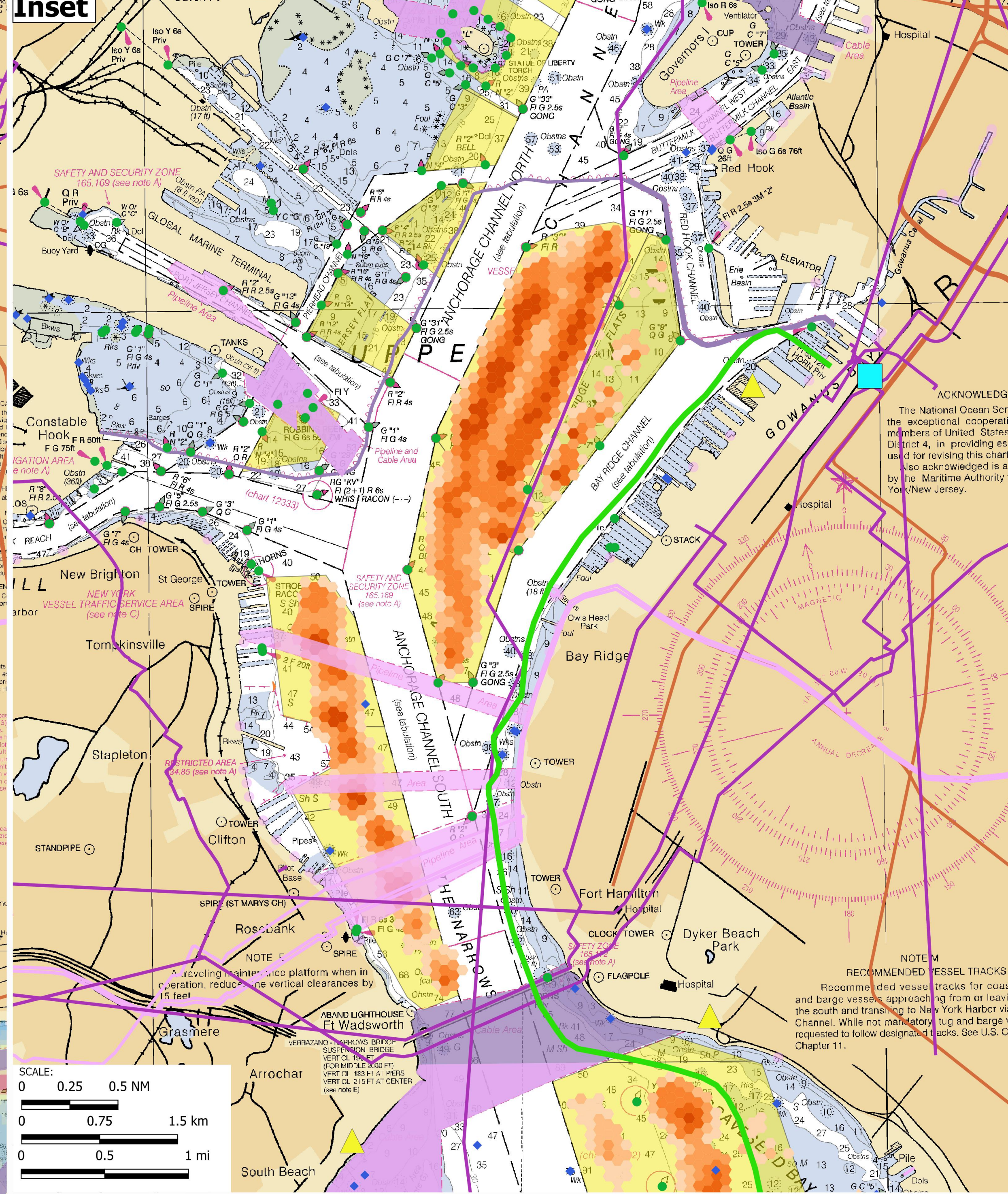
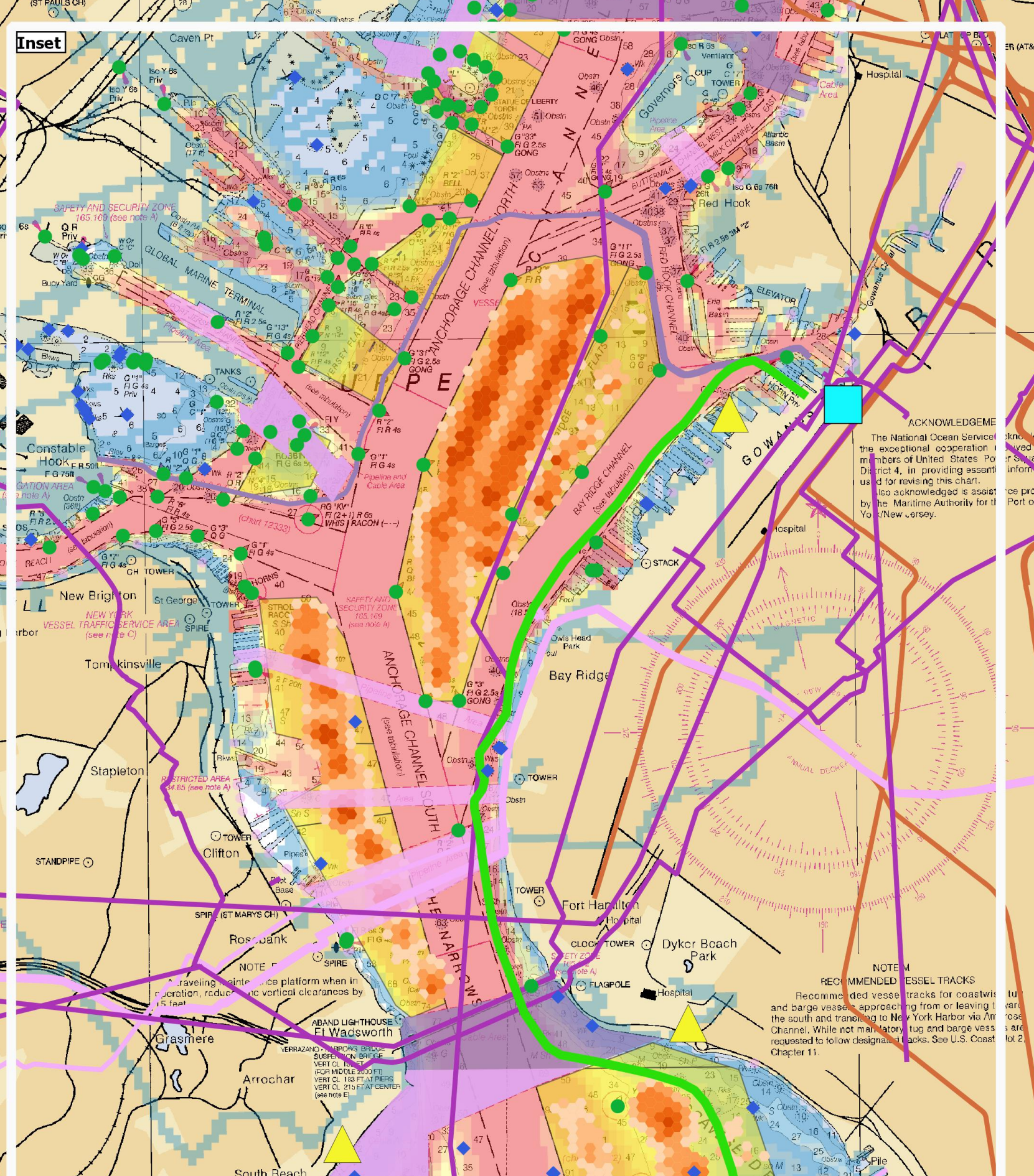


LOWER BAY - HUDSON AND RAISIN REACH PROJECT CORRECTIONS

LINE OF CHANNEL	PROJECT CORRECTION
UPPER BAY	110.00
RAISIN REACH	110.00
HUDSON RIVER	110.00

LOWER BAY - HUDSON AND RAISIN REACH PROJECT CORRECTIONS (continued)

LINE OF CHANNEL	PROJECT CORRECTION
LOWER BAY	110.00
RAISIN REACH	110.00
HUDSON RIVER	110.00



- Legend:**
- Substation (Source: NYSERDA, DNV GL)
 - Existing Electric Transmission Line (Source: PLATTS, HFLD)
 - Proposed Offshore Cable (Source: NYS)
 - Approved Offshore Cable (Source: BOEM)
 - Pipeline (Source: NPMS, NOAA ENC)
 - Pipeline (Source: NOAA ENC)
 - Common Practice Anchorage Area (Source: M-TWG Anchorage Area Assessment Study)
 - Designated Anchorage Area (Source: NOAA ENC)
 - Proposed Anchorage Area (Source: USCG)
 - Aids to Navigation (Source: NOAA ENC)
 - Subway (Source: DOITT)
 - Traffic Separation Scheme (Source: NOAA ENC)
 - Proposed Ferryway (Source: USCG)
 - Recommended Vessel Route (Source: NOAA ENC)
 - Number of Idling AIS Pings 2017 (Source: M-TWG Anchorage Area Assessment Study)
 - Substation (Source: NYSERDA, DNV GL)
 - Landfill (Source: NYSERDA, DNV GL)
 - Significant Coastal Fish and Wildlife Boundaries (Source: NYS)
 - Areas of Lighting Activity (Source: Blue Plan CT)
 - Artificial Reef (Source: Nature Conservancy)
 - Artificial Reef Expansion (Source: NYSDEC)
 - Wreckage (Source: AVOIS, NOAA ENC)
 - Existing Submarine Cable (Source: NOAA ENC, NASCA)
 - Existing Submarine Cable (Source: NOAA ENC)
 - Substation (Source: NYSERDA, DNV GL)
 - Landfill (Source: NYSERDA, DNV GL)
 - Significant Coastal Fish and Wildlife Boundaries (Source: NYS)
 - Areas of Lighting Activity (Source: Blue Plan CT)
 - Artificial Reef (Source: Nature Conservancy)
 - Artificial Reef Expansion (Source: NYSDEC)
 - Wreckage (Source: AVOIS, NOAA ENC)
 - Existing Submarine Cable (Source: NOAA ENC, NASCA)
 - Existing Submarine Cable (Source: NOAA ENC)

AIS Vessel Transit Counts 2017 (Source: NOAA)

Number of Idling AIS Pings 2017
1 - 25
26 - 50
51 - 75
76 - 100
101 - 250
251 - 500
501 - 750
751 - 1500
1,501+

NEW YORK STATE

Energy Research and Development Authority

Department of State

COWI

BTMI Engineering P.C. (COWI)
 Wall Street Plaza,
 88 Pine St., 4th Floor,
 New York, NY 10005
 Tel.: 929.526.0301
 Website: www.cowi.com

NY/NJ Harbor

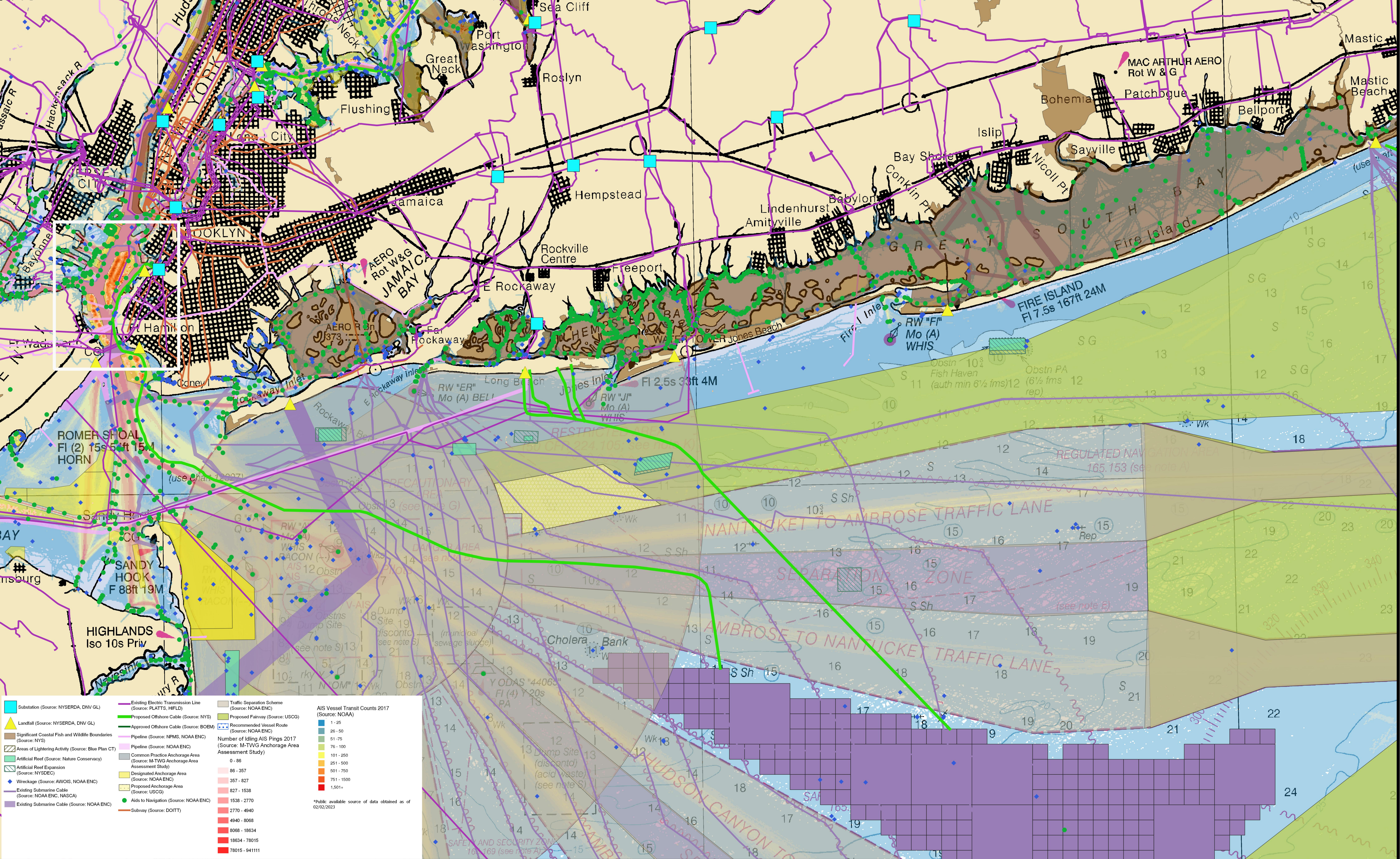
This map is an M-TWG working product for collaboration only, created from compiled datasets from sources as indicated in the legend. COWI makes no claims, no representations, and no warranties express or implied, concerning the validity, the reliability or the accuracy of the GIS data and GIS data products from these sources including the implied validity of any uses of such data.

SCALE:

0 1 2 NM

0 2.5 5 km

0 2.5 5 mi



Substation (Source: NYSERDA, DNV GL)	Existing Electric Transmission Line (Source: PLATTS, HIFLD)	Traffic Separation Scheme (Source: NOAA ENC)	AIS Vessel Transit Counts 2017 (Source: NOAA) 1-25 26-50 51-75 76-100 101-250 251-500 501-750 751-1500 1,501+
Landfill (Source: NYSERDA, DNV GL)	Proposed Offshore Cable (Source: NYS)	Proposed Fairway (Source: USCG)	
Significant Coastal Fish and Wildlife Boundaries (Source: NYS)	Approved Offshore Cable (Source: BOEM)	Recommended Vessel Route (Source: NOAA ENC)	Number of Icing AIS Plings 2017 (Source: M-TVG Anchorage Area Assessment Study) 0 - 86 86 - 357 357 - 827 827 - 1538 1538 - 2770 2770 - 4940 4940 - 8068 8068 - 18634 18634 - 78015 78015 - 941111
Areas of Lightering Activity (Source: Blue Plan CT)	Pipeline (Source: NPMS, NOAA ENC)	Common Practice Anchorage Area (Source: M-TVG Anchorage Area Assessment Study)	
Artificial Reef (Source: Nature Conservancy)	Pipeline (Source: NOAA ENC)	Designated Anchorage Area (Source: NOAA ENC)	*Public available source of data obtained as of 02/02/2023
Artificial Reef Expansion (Source: NYSDEC)	Proposed Anchorage Area (Source: USCG)	Proposed Anchorage Area (Source: USCG)	
Wreckage (Source: AWOIS, NOAA ENC)	Aids to Navigation (Source: NOAA ENC)	Subway (Source: DOITT)	
Existing Submarine Cable (Source: NOAA ENC, NASCA)			
Existing Submarine Cable (Source: NOAA ENC)			